

Analogue Telephone Systems

An analogue telephone system that offers easy-to-use communication power



Panasonic's analogue telephone system has taken telephone systems for small to mid-sized companies a giant leap forward, offering features seldom available in this category. Its easy upgradability reduces the cost of expansion, Caller ID increases your efficiency, and voice-processing integration improves productivity.



KX-TEA308
3 CO lines / 8 Extensions

- 3 CO lines and 8 Extensions (8: Hybrid)
- 3-level Automatic Reception with Voice Guidance
- DISA (Direct Inward System Access) with message
- Built-in Voice Message (BV)
- Caller ID Display on SLT and APT
- Flexible SMS Routing
- Intuitive Customisation and Maintenance
- UCD (Uniform Call Distribution) with message
- Doorphones, Door Openers, and Doorbells



KX-TES824
3 CO lines / 8 Extensions
(Max. 8 CO lines / 24 Extensions)

- Expandable from 3 CO lines and 8 Extensions to 8 CO lines and 24 extensions
- 3-level Automatic Reception with Voice Guidance
- DISA (Direct Inward System Access) with message
- Built-in Voice Message (BV)
- Caller ID Display on SLT and APT
- Flexible SMS Routing
- Intuitive Customisation and Maintenance
- UCD (Uniform Call Distribution) with message
- Doorphones, Door Openers, and Doorbells



KX-TEM824
6 CO lines / 16 Extensions
(Max. 8 CO lines / 24 Extensions)

- Expandable from 6 CO lines and 16 Extensions to 8 CO lines and 24 extensions
- 3-level Automatic Reception with Voice Guidance
- DISA (Direct Inward System Access) with message
- Built-in Voice Message (BV)
- Caller ID Display on SLT and APT
- Flexible SMS Routing
- Intuitive Customisation and Maintenance
- UCD (Uniform Call Distribution) with message
- Doorphones, Door Openers, and Doorbells



KX-T7730
Display Unit
- 1 line x 16 characters LCD

KX-T7750
Monitor Unit

KX-T7720
Speakerphone Unit

KX-T7740
DSS Console
- 32 Direct Station Selection (DSS) keys
- 32 Busy Lamp Field (BLF) keys

| | | | TEA308 | TES824 | TEM824 | TVM50 | TVM200 |
|----------------|------------|--|--------|--------|--------|-------|--------|
| Telephones | KX-T7750 | Proprietary Telephone with Monitor (12 CO keys) | • | • | • | | |
| | KX-T7720 | Proprietary Telephone with Speakerphone (12 CO keys) | • | • | • | | |
| | KX-T7730 | Proprietary Telephone with 1-Line Display and Speakerphone (12 CO keys) | • | • | • | | |
| | KX-T7735 | Proprietary Telephone with 3-Line Display and Speakerphone (12 CO keys) | • | • | • | | |
| | KX-T7740 | DSS Console (32 DSS / BLF keys, 16 PF keys) | • | • | • | | |
| | KX-T7710 | Proprietary Telephone with Message / Ringer Lamp, One-Touch Dialler, Data Port | • | • | • | | |
| | KX-T7101 | SLT with Message Lamp, One-Touch Dialler, Data Port | • | • | • | | |
| Others | KX-T30965 | Doorphone | • | • | • | | |
| | KX-A227 | Backup Battery Cable | • | • | • | | |
| Analogue Cards | KX-TE82460 | 2-Port Doorphone / Door Opener Card | • | • | • | | |
| | KX-TE82461 | 4-Port Doorphone / Door Opener Card | | • | • | | |
| | KX-TE82474 | 8-Port Single Line Telephone Extension Card | | • | • | | |
| | KX-TE82480 | 2-Port Analogue CO Line and 8-Port Single Line Telephone Extension Card | | • | • | | |
| | KX-TE82483 | 3-Port Analogue CO Line and 8-Port Hybrid Extension Card | | • | | | |
| | KX-TE82491 | Message Expansion Card for OGM (1 ch, 180 sec) | | • | • | | |
| | KX-TE82492 | 2-Channel Voice Message Card | • | • | • | | |
| | KX-TE82493 | 3-Port Caller ID Card | • | • | • | | |
| TVM Cards | KX-TVM502 | 2-Port Hybrid Expansion Card | | | | • | |
| | KX-TVM524 | Memory Expansion Card | | | | • | |
| | KX-TVM594 | LAN Interface Card | | | | • | |
| | KX-TVM296 | Modem Card | | | | • | • |
| | KX-TVM204 | 4-Port Digital Expansion Card | | | | | • |

SLT : Single Line Telephone APT : Analogue Proprietary Telephone
DISA : Direct Inward System Access

Notes:
Some cards will be exported to limited countries. Please contact your dealer and confirm the availability of specific cards in your country.

Hybrid IP PBX Systems

The All You Need Networked System to maximise the performance of your business in the Convergence age



► Grows With You

The KX-TDA600's modular design lets you expand the system as your needs evolve. The Basic Shelf provides maximum 160 ports (240 ports with DXDP^{*1}), and the optional Expansion Shelf provides maximum 688 ports (1008 ports with DXDP)^{*2}. Plus with the KX-TDA600's free slot architecture, you can easily insert expansion cards and access new features as well as expand your capabilities. This expandability means you can enhance system capabilities and features to meet your changing needs, without having to purchase a new system.

^{*1} Digital eXtra Device Port

^{*2} When connected to analogue CO line.

The number may vary depending on the configuration.



KX-TDA600/620

640 CO lines and
640 to 960 Extensions
(Max. 688 to 1008 ports)



KX-TDA30

Max. 8 CO lines / 28 Extensions
(52 Extensions with DXDP) or
Max. 12 CO lines / 24 Extensions
(44 Extensions with DXDP)
IP-GW or E1 can be added using
a remaining slot.



KX-TDA100

64 CO lines /
64 to 128 Extensions
(Max. 108 to 158 ports)



KX-TDA200

128 CO lines and
128 to 256 Extensions
(Max. 216 to 316 ports)

► Makes Communications Easy

- Stylish, Easy to use, and Efficient digital telephones
- A USB terminal that provides easy plug-n-play connection to a PC
- Expansion of digital proprietary telephones (DXDP)

► Cost-effective Performance

- Voice over Internet Protocol (VoIP)
- QSIG digital networking allows basic call handling (outgoing and incoming), closed numbering routing, and CLIP/COLP/CLIR/COLR
- Automatic Route Selection (ARS) / Least Cost Routing (LCR)
- Reliable networking via T1/E1, E&M

► Efficiency That You Will Appreciate

- Multi-cell wireless integration
- Mobile phone integration
- TAPI 2 CTI interface (TAPI and CSTA)
- PC-phone / PC-console
- Advanced call centre function
- ISDN capability (BRI/PRI)
- Centralised Voice Mail
- 2ch Cell Station to connect DPT interface port

KX-T7633

Display Unit

- 3-Line Back-lit Display
- 24 Programmable CO Keys
- Digital Speakerphone
- Optional 12 CO Keys and USB port
- eXtra Device Port (XDP) and DXDP
- Headset Compatible



KX-T7630

Display Unit

- 3-Line Display
- 24 Programmable CO Keys
- Digital Speakerphone
- eXtra Device Port (XDP) and DXDP
- Headset Compatible



KX-T7665

Display Unit

- 1-Line Display
- 8 Programmable CO Keys
- Message / Ringer Lamp
- Speakerphone
- DXDP

KX-T7625

Speakerphone Unit

- 24 Programmable CO Keys
- Digital Speakerphone
- eXtra Device Port (XDP) and DXDP
- Headset Compatible



KX-T7667

Digital Proprietary Telephone

- 1-Line Display
- 12 Programmable CO Keys
- Incoming Call / Message Lamp
- Digital Speakerphone
- Headset Compatible



KX-T7640

Digital DSS Console

- 60 Direct Stations Selection (DSS) keys



KX-T7710

Proprietary Telephone

- Message / Ringer Lamp
- One-touch Button Panel
- Data Port



KX-T7101

Single Line Telephone

- Message Lamp
- One-touch Speed Dialer
- Data Port



KX-NT265 IP Telephone

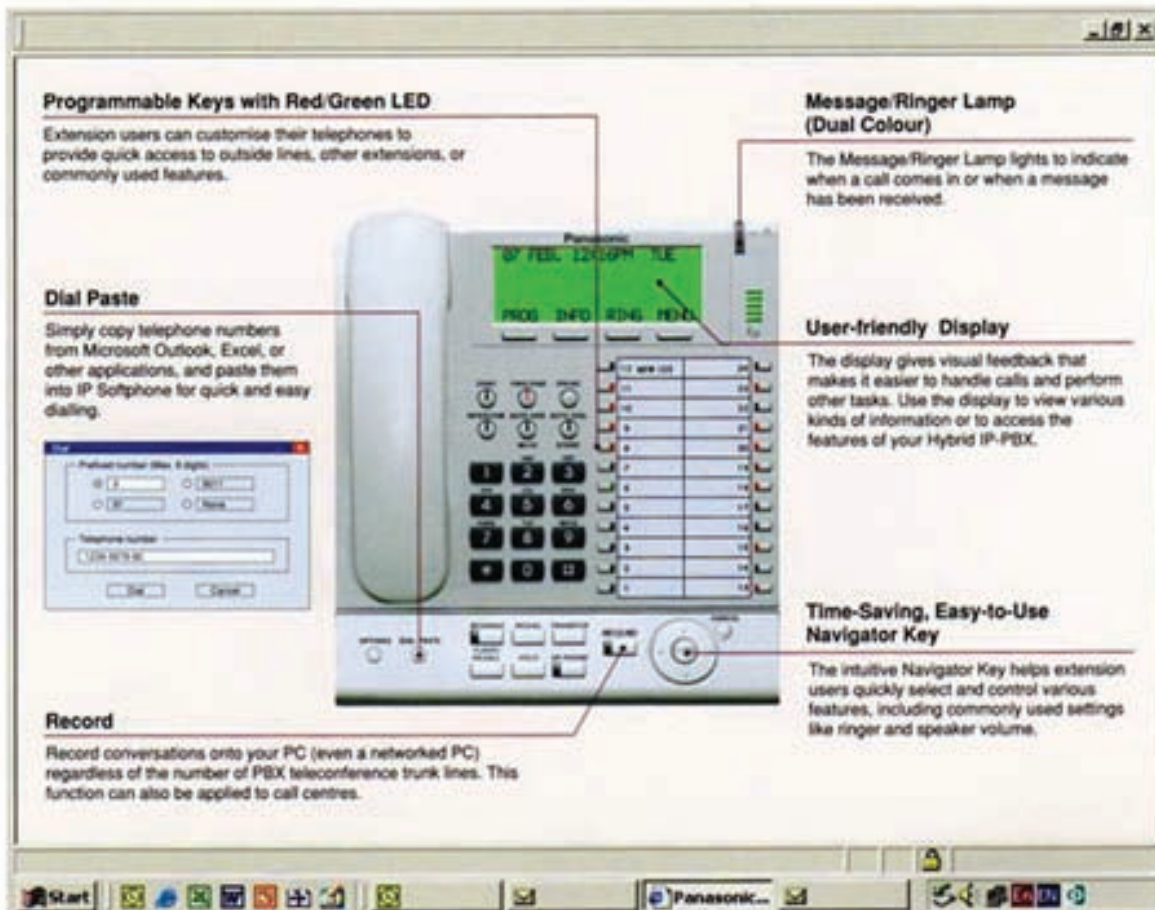
- 1 Line Display
- 8 Programmable CO Keys
- Message/Ringer Lamp
- Digital Speakerphone



Compatible Operating Systems :

KX-TDA100/KX-TDA200 : PMPR Software File Version 3.0000 or later
 KX-TDA600 : PLMPR Software File Version 3.0000 or later
 KX-TDA0470 (IP-EXT16) : PIPEXT Software Version 1.001 or later
 / PVOIPEX Software Version 1.011 or later

KX-NCS8100 IP Softphone (IP Proprietary Telephone in PC)



Programmable Keys with Red/Green LED
 Extension users can customise their telephones to provide quick access to outside lines, other extensions, or commonly used features.

Message/Ringer Lamp (Dual Colour)
 The Message/Ringer Lamp lights to indicate when a call comes in or when a message has been received.

Dial Paste
 Simply copy telephone numbers from Microsoft Outlook, Excel, or other applications, and paste them into IP Softphone for quick and easy dialing.

User-friendly Display
 The display gives visual feedback that makes it easier to handle calls and perform other tasks. Use the display to view various kinds of information or to access the features of your Hybrid IP-PBX.

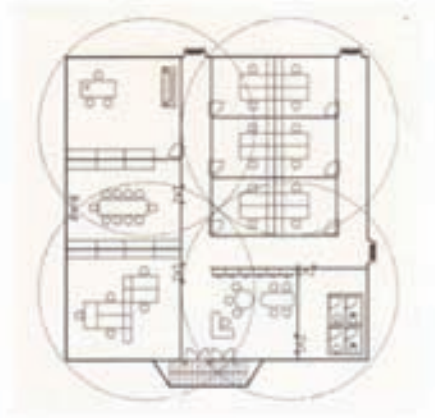
Time-Saving, Easy-to-Use Navigator Key
 The intuitive Navigator Key helps extension users quickly select and control various features, including commonly used settings like ringer and speaker volume.

Record
 Record conversations onto your PC (even a networked PC) regardless of the number of PBX teleconference trunk lines. This function can also be applied to call centres.



Wireless Solutions (DECT / 2.4GHz)

Wireless compatible, Panasonic Business Telephone System gives you greater efficiency and mobility with communication powers that go way beyond the office. In operations such as factories and warehouses, it lets your staff stay on top of merchandise while moving about the shop floor. At car dealerships and other businesses with widespread locations, it lets you respond to customers more quickly. This new digital system lets you provide prompt customer service and make the most of every business opportunity.



DECT

2.4GHz



KX-TCA256*

DECT

- 6 lines with 16-character LCD for calling line ID display and easy operation
- Graphical icon menu
- Dynamic operation guidance with soft keys
- Automatic hand-over
- Automatic Answer / Release with headset
- Incoming call indication by Ringer / Vibration
- 32-Polyphonic ring tones
- Customised caller ID
- 200-station phonebook
- Illuminated keypad
- Blue LCD backlight
- Battery – talk time : 17 hours
standby time : 270 hours
- Dimensions (LxWxD) :
123 x 45 x 22 mm
- Weight : 120 g



KX-TCA155

DECT

- 6 lines with 16-character LCD for calling line ID display and easy operation
- Graphical icon menu
- Dynamic operation guidance with soft keys
- Automatic hand-over
- Automatic Answer / Release with headset
- 32-Polyphonic ring tones
- Customised caller ID
- 200-station phonebook
- Illuminated keypad
- Blue LCD backlight
- Battery – talk time : 10 hours
standby time : 120 hours
- Dimensions (LxWxD) :
143 x 48 x 31.5 mm
- Weight : 130 g



KX-TD7690

2.4GHz Wireless Telephone

- Pocket Size Mobility
- Navi-key Operation
- 5 lines by 16 characters LCD with back light
- Vibrator Ringing
- 100 directory dialling
- Illuminated Keypad
- Speakerphone Operation
- Auto Answer
- 4 Melodies and 6 Ringing Patterns
- 2 LCD Colours by Caller ID
- Dimensions (LxWxD) :
136 x 40 x 19 mm
- Weight : 71 g



KX-TD7680

2.4GHz Wireless Telephone

- Pocket Size Mobility
- Navi-key Operation
- 3 lines by 16 characters LCD with back light
- Vibrator Ringing
- 100 directory dialling
- Illuminated Keypad
- Speakerphone Operation
- Auto Answer
- 4 Melodies and 6 Ringing Patterns
- Dimensions (LxWxD) :
151 x 49 x 32 mm
- Weight : 143 g